



IPPC1202-RE

(P/N : S02IPPC12--A10100P)

Benchmark Test Report

Version : A1

File No: SDT-003889

Inspector : Tony Tsai

Leader : T.L. Chiang

Date : 2015 / 06 / 29



IBASE TECHNOLOGY INC.
Bldg. G, 11F, No. 3-1, Yuan Qu St.,
Nankang, Taipei, Taiwan, R.O.C.

TEL: +886-2-2655-7588
FAX: +886-2-2655-7388
E-mail: sales@ibase.com.tw

Place: iBASE Lab	RT : 23.8 °C	Humidity : 53.1%RH
------------------	--------------	--------------------

Purpose:

Verify the system produces acceptable performance measurements consistent with comparable system and other equipment available in the IPC field.

Configuration:

Item	Description
M/B	IB806-D25 V-1.0 (ZD01IB806---10020P)
CPU	Intel® Atom™ Processor D2550 P/N : C018ATOMG18615100P CPU Speed : 1.86 GHz Intel® Smart Cache : 1 MB
Memory	Transcend / SO-DIMM DDR3L 2G/1600 1.35V [TS7W9SDSQ-I] P/N : C0373900200081520P Samsung 256Mx8 , CL11
Storage	TOSHIBA / 2.5" 500G SATAIII 7mm[MQ01ABF050] P/N : A002SLSAG50010120P Speed : 5400 RPM Cache Buffer : 8MB
Power Supply	FSP / ADAPTER 84W 12V W/LOCK [FSP084-DIBAN2] P/N : A005PS084W0070200P
BIOS Version	IB806-F1F-CP1A-130128

Software Configuration :

OS	Windows 7 Ultimated (32bit)
Application - I	PerformanceTest 7.0 (1019) WIN32
Application - II	AIDA64 Extreme V-4.50.3029 (Beta)
VGA Driver	Intel® Graphics Media Accelerator 3600 Series Driver Version : 8.14.8.1089 Driver Date : 2012 / 11 / 07

Test Result - I:

The PassMark Rating for this computer	343.5
---------------------------------------	--------------

Software Weighting:

Test Suite	Weighting	Mark
Disk	21%	616.0
CD / DVD	5%	0.0 <small>(Note1)</small>
Memory	19%	269.0
3D Graphics	12%	112.0
2D Graphics	14%	83.6
CPU	29%	730.7
Total	100%	343.5

Note1: The system lacking CD/DVD.

Test Result - II:**Test Suite - Disk**

Disk Tests	Result
Sequential Read	80.3
Sequential Write	88.6
Random Seek+RW	1.5

Test Suite - Memory

Memory Tests	Result
Allocate Small Block	829.7
Read Cached	859.8
Read Uncached	763.4
Write	784.7
Large RAM	241.2

Test Suite - 3D

3D Tests	Result
Simple	135.1
Medium	51.8
Complex	7.3

Test Suite - 2D

2D Tests	Result
Solid Vectors	0.3
Transparent Vectors	0.3
Complex Vectors	80.3
Fonts and Text	22.3
Windows Interface	10.1
Image Filters	92.7
Image Rendering	96.5

Test Result - III:**Test Suite - CPU**

CPU Tests	Result
Integer Math	52.5
Floating Point Math	228.0
Find Prime Numbers	125.7
Multimedia Instructions	2.7
Compression	1722.0
Encryption	6.5
Physics	39.6
String Sorting	968.6

Test Result - IV:

Windows Experience Index

Component	Result
Processor	3.6
Memory (RAM)	4.9
Graphics	5.9
Gaming Graphics	3.4
Primary hard disk	5.9

The screenshot shows the Windows Performance Information and Tools window. The main heading is "Rate and improve your computer's performance". Below this, it states "The Windows Experience Index assesses key system components on a scale of 1.0 to 7.9." A table lists the components and their scores, with a large "3.4" score displayed on the right, noted as "Determined by lowest subscore".

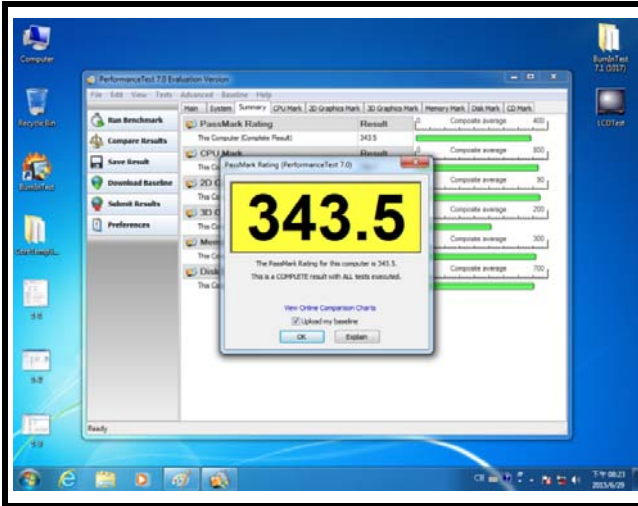
Component	What is rated	Subscore	Base score
Processor:	Calculations per second	3.6	3.4 Determined by lowest subscore
Memory (RAM):	Memory operations per second	4.9	
Graphics:	Desktop performance for Windows Aero	5.9	
Gaming graphics:	3D business and gaming graphics performance	3.4	
Primary hard disk:	Disk data transfer rate	5.9	

Additional information from the screenshot includes:

- Navigation links: Control Panel Home, Adjust visual effects, Adjust indexing options, Adjust power settings, Open disk cleanup, Advanced tools.
- Help links: What do these numbers mean?, Tips for improving your computer's performance., Learn more about scores and software online.
- Action: View and print detailed performance and system information.
- Status: Your scores are current. Last update: 2015/6/12 下午 04:38:06. Re-run the assessment button.
- See also: Action Center.

Testing Photos:

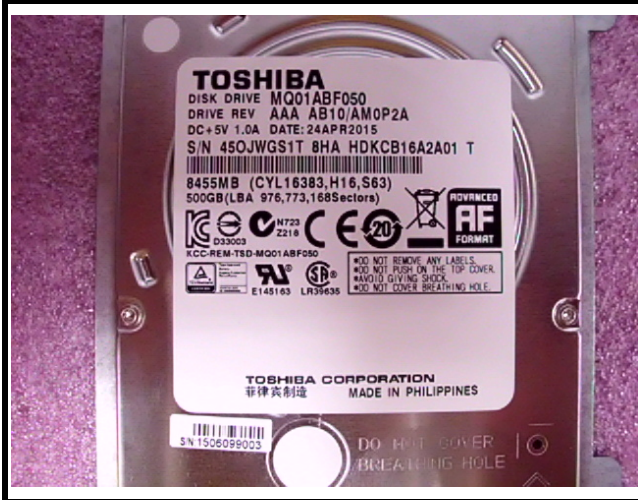
1. Testing Result



2. Testing Environment



3. Storage



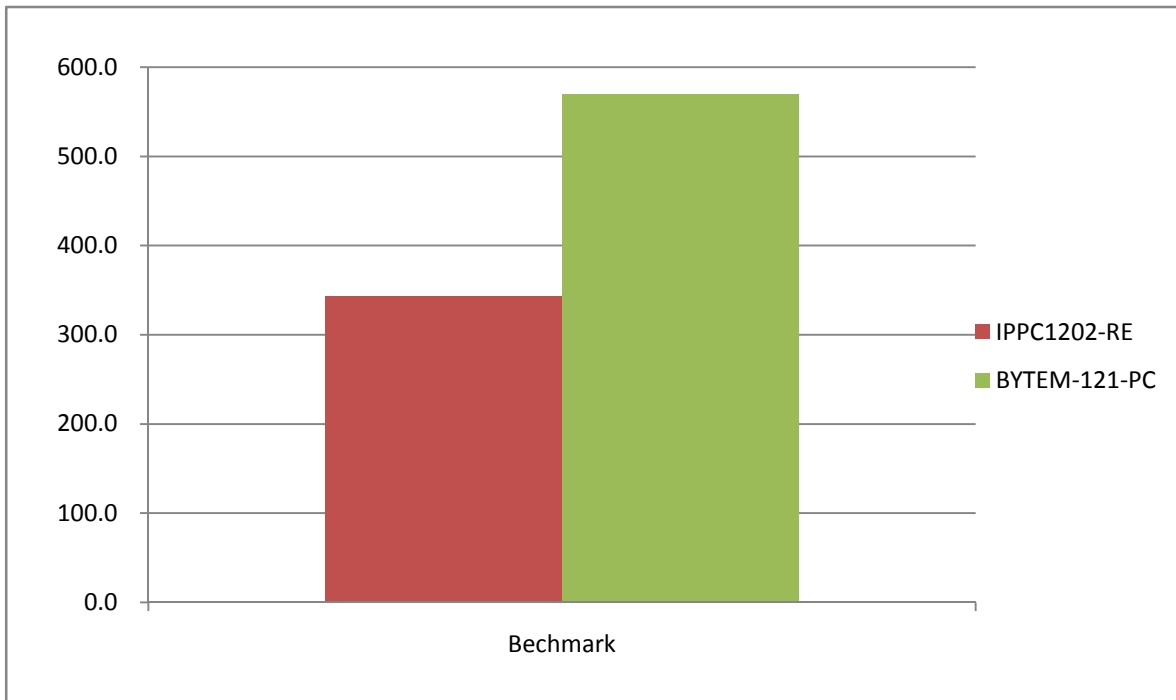
4. Memory



Benchmark Comparison :

SYSTEM	Mark
IPPC1202-RE	343.5
BYTEM-121-PC	569.5

Test Suite	IPPC1202-RE	BYTEM-121-PC
Disk	616.0	1380.1
Memory	269.0	369.6
3D Graphics	112.0	147.8
2D Graphics	83.6	151.1
CPU	730.7	1373.0



SPD Information:

The screenshot shows the AIDA64 Extreme interface with the SPD (Serial Presence Detect) information for a memory module. The left sidebar shows the system tree with 'SPD' selected under 'Memory'. The main window displays the following details:

裝置描述
DIMM2: Transcend TS256MSK64W6N

欄位	值
記憶體模組內容	
模組名稱	Transcend TS256MSK64W6N
序號	000A8609h (159779328)
製造日期	週 16 / 2015
模組大小	2 GB (1 rank, 8 banks)
模組類型	SO-DIMM
記憶體類型	DDR3 SDRAM
記憶體速度	DDR3-1600 (800 MHz)
模組寬	64 bit
模組電壓	1.35 V / 1.5 V
錯誤偵測方法	無
更新率	一般 (7.8 us)
記憶體計時	
@ 800 MHz	11-11-11-28 (CL-RCD-RP-RAS) / 39-128-5-12-6-6-24 (RC-RFC-RRD-WR-WTR-RTP-FAW)
@ 761 MHz	10-10-10-27 (CL-RCD-RP-RAS) / 37-122-5-12-6-6-23 (RC-RFC-RRD-WR-WTR-RTP-FAW)
@ 685 MHz	9-9-9-24 (CL-RCD-RP-RAS) / 33-110-5-11-6-6-21 (RC-RFC-RRD-WR-WTR-RTP-FAW)
@ 609 MHz	8-8-8-22 (CL-RCD-RP-RAS) / 30-98-4-10-5-5-19 (RC-RFC-RRD-WR-WTR-RTP-FAW)
@ 533 MHz	7-7-7-19 (CL-RCD-RP-RAS) / 26-86-4-8-4-4-16 (RC-RFC-RRD-WR-WTR-RTP-FAW)
@ 457 MHz	6-6-6-16 (CL-RCD-RP-RAS) / 22-74-3-7-4-4-14 (RC-RFC-RRD-WR-WTR-RTP-FAW)
@ 380 MHz	5-5-5-14 (CL-RCD-RP-RAS) / 19-61-3-6-3-3-12 (RC-RFC-RRD-WR-WTR-RTP-FAW)
記憶體模組功能	
Auto Self Refresh (ASPR)	不支援

SPD Copyright (c) 1995-2014 FinalWire Ltd.